

2023 ECONOMIC PERFORMANCE OF CARAGA

Gross Regional Domestic Expenditure
At Constant 2018 Prices

PER CAPITA HFCE

(Household Final Consumption Expenditure)

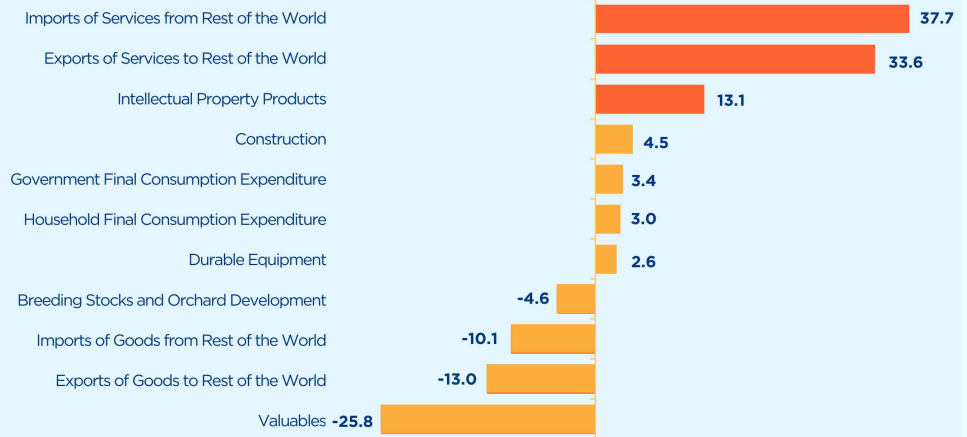


PhP 91,407

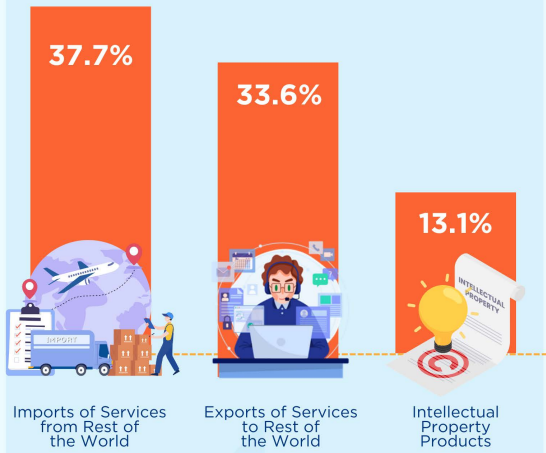
Per Capita HFCE registered a 2.0% increase compared to the previous year's estimate at PhP 89,603.

GROWTH RATES BY EXPENDITURE ITEM

(in Percent)



TOP 3 FASTEST GROWING EXPENDITURE ITEMS



CONTRIBUTION TO GROWTH BY EXPENDITURE ITEM

EXPENDITURE ITEM	CONTRIBUTION TO GROWTH (In Percentage Point)
Net Exports to Rest of the Philippines	4.7
Household Final Consumption Expenditure	2.3
Government Final Consumption Expenditure	0.6
Gross Capital Formation	0.2
Net Exports to Rest of the world	-2.9

SHARE OF EXPENDITURE ITEMS TO THE REGIONAL ECONOMY (in Percent)



76.4%
Household Final Consumption Expenditure



33.4%
Gross Capital Formation



29.9%
Exports of Goods and Services to the Rest of the World



17.0%
Government Final Consumption Expenditure



2.6%
Imports of Goods and Services from the Rest of the World